

SRP || Society for Research in Psychopathology

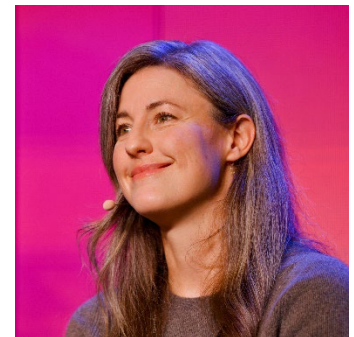
Dear SRP Members,

There are a host of reasons to plan on attending the 38th annual meeting of the Society for Research in Psychopathology! For submissions see the meeting page at <https://psychopathology.org/annual-meeting-2/>

Meeting in “The City of Angels” September 25th to 28th. The 38th Annual Meeting of the Society for Research in Psychopathology will be held in the renowned Biltmore Hotel in Los Angeles. The Biltmore is a grand hotel with a rich history and more than a few appearances in Hollywood films. Situated in the heart of downtown Los Angeles, the Biltmore is located directly across from a Metro subway station (yes, Los Angeles does have a subway system!) that connects you to several areas of the city, including Santa Monica beach - so soak up some Southern California sunshine. Universal Studios is not far away and downtown Los Angeles is home to world class dining, bars, museums, and attractions.

Keynote Addresses by Harden and Frohlich. In addition to the inviting fall venue of LA, the scientific program will feature keynote addresses by Paige Harden and Flavio Frohlich. **Dr. Harden**

(<https://www.kpharden.com/>) is Professor of Psychology at the University of Texas at Austin, where she directs the Developmental Behavior Genetics lab, co-directs the Texas Twin Project, and is the Director of Clinical Training for the Clinical Psychology graduate program. She is a graduate of Furman University and the University of Virginia. Her research uses genetic and epigenetic research methods to understand why people’s lives turn out differently. She is particularly interested in adolescence, a period of rapid and formative change that helps shape health and well-being for the rest of the life course. Her first book, *The Genetic Lottery: Why DNA Matters for Social Equality*, was named one of the “Best books of 2021” by The Economist, was the subject of a profile in The New Yorker, and has been translated into 10 languages. Her new book, *Original Sin: Genetics, Blame, and the Future of Forgiveness* will be published in 2026. **Dr. Frohlich**



*Paige Harden will present
“Genomic Insights into the
Externalizing Spectrum”*



*Flavio Frohlich will present
“Synchrony and Symphony:
Harnessing Brain Rhythms to
Revolutionize Mental Health
Treatment”*

is a distinguished neuroscientist and Professor of Psychiatry at the University of North Carolina at Chapel Hill, where he also serves as Director of the Carolina Center for Neurostimulation and Associate Vice Chair of Research in the Department of Psychiatry. He holds graduate degrees in electrical engineering (ETH Zurich), neurobiology (UCSD), and clinical psychology (UNC). He leads a multidisciplinary research program focused on developing novel brain stimulation therapies based on network neuroscience principles. Dr. Frohlich pioneered the use of transcranial alternating current stimulation (tACS) and has conducted groundbreaking double-blind, placebo-controlled clinical trials for depression, schizophrenia, and chronic pain.

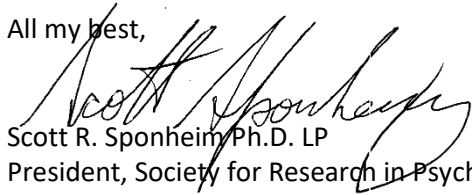
The usual top-notch psychopathology research by SRP members and award winners. Featured presentations of the Early Career Award finalists in the Faces of the Future symposium will be a meeting highlight and provide a look at future directions in psychopathology research. And the Zubin Award address will provide a review of the life work of an esteemed psychopathologist. We also anticipate a wide variety of groundbreaking symposia, oral and poster presentations, and workshop/panel discussion sessions.

Networking and Mentoring. A defining feature of SRP is the engagement of psychopathology researchers across all stages of the scientific career. Mentoring is central to SRP which is reflected in there being as many Associate Members as Full Members. At SRP 2025 in LA, student poster presenters can invite established Full Members to their posters for conversations. Also, lunches with Full Members will provide opportunities for casual conversations about psychopathology research and navigating career and funding landscapes. Full Members of SRP serve as editors and reviewers for scientific journals, chair search committees, and are NIH grant recipients and reviewers, and as such, networking at the meeting can help propel careers. The strength of research by Associate Members will also be recognized with the Smadar Levin, President's, and other awards. A networking session will allow those new to SRP make connections.

Advocacy. This year, more than ever, it is important to gather as a scientific community to address threats to scientific inquiry and the careers of psychopathology researchers. Our work has been strengthened through our annual gatherings, and current events require us to band together to advocate for research in psychopathology. I've always experienced SRP as a deeply collaborative scientific community. We must continue to support one another in finding new knowledge to relieve human suffering from psychopathology.

See you in LA!

All my best,



Scott R. Sponheim Ph.D. LP

President, Society for Research in Psychopathology

Clinician Investigator & Staff Psychologist, Minneapolis VA Health Care System

Professor, University of Minnesota